

# Seetru Limited

Seetru are Bristol-based manufacturers of safety relief and other special purpose ancillary valves for a wide range of compressed air, industrial gas, refrigerants, powder, steam, liquid and liquefied gas applications. Seetru change-over valves offer increased plant and process efficiency.

Seetru liquid level gauges are primarily of two types, sight gauges and magnetic float bypass gauges. Many of the gauges are direct reading though most have optional electronic remote reading systems and computer interfaces.



## Seetru Products

*for the Cryogenic and Liquefied Gas Industry*



## CRYOGENIC AND LIQUEFIED GAS



**Seetru Limited**  
*That's Safety!*

Version 4 (18.1.2024)





### Safety Relief Valves and Change Over Valves

*Suitable for the following applications:*

- Pressure Vessels
- Medical Gases
- Technical Gases
- Cryogenic Systems
- Liquefied Gases
- Natural Gas CNG/LNG
- NGV Filling Stations
- Gas Storage

The Seetru range of safety valves for cryogenic & liquefied gas applications are built using Seetru sealing technology, suitable for temperatures down to -196°C, and pressures up to 1100 bar (depending on the specific model). Available with Elastomer Rubber, PTFE, PPS, metal-to-metal or ceramic sealing.

These valves are manufactured to meet demanding applications which include being used on pressure vessels/receivers, pressure equipment and piping, cryogenic plants including oxygen and special gases, cryogenic compressor applications, container lorry/cryogenic trailers, industrial freezing, liquefied gas storage and fire fighting equipment. They are also widely used for natural gas systems including Natural Gas Vehicle (NGV) filling stations for CNG/LNG.

These valves meet important international standards which include: ISO-4126-1 & -7 and ASME BPVC VIII.1 & XIII design codes as well as type test approvals from TÜV and the National Board. These products comply with the requirements of the European Pressure Equipment Directive (PED) and are available with both the CE mark as well as the UV stamp, and have wide international approvals such as the EAC (TR CU) customs union certification and declaration and the Canadian CRN. Seetru products are fully compliant with the requirements of the UK Pressure Equipment (Safety) Regulations and come with the UKCA mark.

Change-over valves (sometimes referred to as selector valves or three-way valves) enables the switching of flow from one safety valve to another. Typically used where plant shutdown is impossible or undesirable for process, engineering or commercial reasons. With change-over valves it is possible to switch over between parallel safety valves without interrupting operation, so that maintenance work can be carried out on each safety valve in turn. Seetru change-over valves in combination with our safety valves provide the best solution for plant safety and efficiency. Seetru products are widely recognised for their exceptional quality and reliability.

## Contents



Type	Product / Design	Materials	Pressure Range	Details	Page
346 / 356	Enclosed Discharge Safety Valve Threaded connections	Bronze or Stainless steel construction with PTFE sealing	0.83 to 30.76 bar	10mm Nominal Bore Suitable for -196°C to +50°C	<a href="#">4,5,6</a>
329	Enclosed Discharge Safety Valve Threaded connections	Bronze or Stainless steel construction with PTFE or PPS sealing	53.0 to 370.0 bar	6mm Bore Suitable for -196°C to +70°C	<a href="#">7,8,9</a>
936	Enclosed Discharge Safety Valve Threaded connections	Bronze or Stainless steel body & brass inlet with Metal to Metal sealing	0.3 to 28.0 bar (depending on valve bore size)	10mm, 15mm, 20mm or 25mm Bore Suitable for -196°C to +250°C	<a href="#">10,11,12</a>
636	Enclosed Discharge Safety Valve Threaded connections	Bronze body with elastomer rubber sealing	0.32 to 55.2 bar (depending on bore size)	10mm, 13mm, 18mm, 20mm or 25mm Nominal Bore Suitable for -40°C to +200°C	<a href="#">13,14,15</a>
646	Enclosed Discharge Safety Valve Threaded connections	Stainless Steel with elastomer rubber sealing	0.32 to 55.2 bar (depending on bore size)	10mm, 13mm, 18mm, 20mm or 25mm Nominal Bore Suitable for -40°C to +200°C	<a href="#">16,17,18</a>
359	Enclosed Discharge Safety Valve Flanged connections	Stainless Steel with Metal to Metal sealing	35.0 to 500.0 bar	4.6mm Nominal Bore Suitable for -50°C to +200°C	<a href="#">19,20,21</a>
946 Flanged	Enclosed Discharge Safety Valve Flanged connections	Stainless steel construction with metal to metal sealing	0.3 to 28.0 bar	10mm or 15mm Nominal Bore Suitable for -50°C to +250°C	<a href="#">22,23,24</a>
COV10	Change Over Valve	Stainless steel construction with PTFE sealing	For Safety valves with set pressure up to 75.0 bar g	Suitable for Safety Relief Valves with up to 10mm bore (Full Lift Type)	<a href="#">25,26,27</a>
COV13	Change Over Valve	Stainless steel construction with PTFE or Elastomer sealing	For Safety valves with set pressure up to 65.0 bar g	Suitable for Safety Relief Valves with up to 10mm bore (Full Lift Type)	<a href="#">25,26,27</a>
COV30	Change Over Valve	Stainless steel construction with PTFE sealing	For Safety valves with set pressure up to 100.0 bar g	Suitable for Safety Relief Valves with up to 18mm bore (Full Lift Type)	<a href="#">25,26,27</a>

# Enclosed Discharge Safety Relief Valves

Seetru Limited

for compressed air or gases

cryogenic & liquefied gas

refrigeration

## Type 346 / 356

Safety valves with either Bronze or Stainless Steel body <  
Enclosed discharge valve with threaded connections <

### Example Applications

- Air/Gas systems
- Pressure vessels
- Medical gases
- Technical Gases
- CO2 refrigeration
- Ammonia refrigeration (34610)
- Cryogenic applications
- Liquefied gases

### Specifications

- Inlet connections: 3/8" to 3/4"
- Temperature range: -196°C to +50°C
- Pressure range: 0.83 to 30.76 bar

### Materials of Construction

Component	Material	Grade
Inlet	Stainless Steel	1.4401 (316)
Body	356 Valve = Bronze	C83600
	346 Valve = Stainless Steel	1.4408 (316)
Internal Parts	356 Valve = Brass	BS2874 CZ121
	346 Valve = Stainless Steel	1.4401 (316)
Spring	Stainless Steel	1.4310 (302)

### Approvals

- Designed in accordance with BS EN ISO-4126-1 &-7
- PED 2014/68/EU (CE)
- PE(S)R UK SI 2016 No. 1105 (UKCA)
- EAC
- Materials meet the requirements of BAM for oxygen service.

CE UK EAC

### Seal Materials

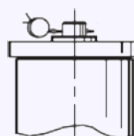
Seal Material	Temperature Range
PTFE	-196°C to +50°C

Standard seal materials shown, others are available.

### Top Fitting Options

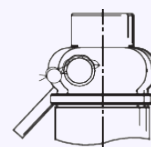
#### - Standard Option

Sealed Cap (gas tight cap)



#### - Other options:

Sealed lever (gas tight)



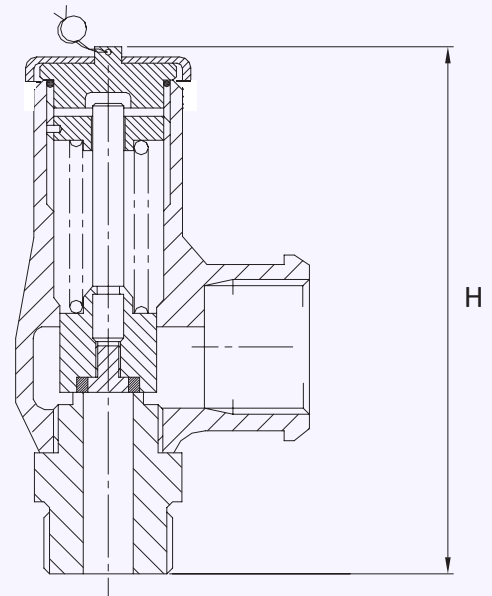


## Technical information by bore size

Bore size	9.5mm (34610)			9.5mm (35610)		
Inlet Size	3/8"	1/2"	3/4"	3/8"	1/2"	3/4"
Outlet Size	3/4"			3/4"		
Flow Area	70.9mm <sup>2</sup>			70.9mm <sup>2</sup>		
H - Height (Rota-lift cap version)	113mm			99mm		
TÜV allotted outflow coefficient	0.6 (0.83 to 3.0 bar)			0.6 (0.83 to 3.0 bar)		
Weight (approximate) Kg	0.7 (3.0 to 30.76 bar)			0.7 (3.0 to 30.76 bar)		
Set Pressure range - PED (CE) bar	0.8			0.8		
Relieving pressure/fully open pressure	Set pressure +10%					
Reseating pressure	Set pressure -10%					

Maximum permissible built up back pressure = 10% of set pressure at or below which flow is not reduced. Stable operation on flows down to 50% of valve rated capacity.

## Valve drawing



## Standard Thread Connection Types

- BSP Parallel male thread
- BSP Taper male thread
- NPT male thread

## Standard Outlet Connection Types

- BSP Parallel female thread
- NPT female thread

## Valve Selection Guide

Body Material	Valve Type	Select Bore	Inlet Size	Inlet Thread Type	Outlet Thread Type	Easing Gear	Seal Material
Stainless Steel	<b>346</b>	9.5mm	Select inlet size from above table	Select Inlet thread type	Select Outlet thread type	Sealed cap	PTFE
Bronze	<b>356</b>						

EAC marking available upon request

**\*Please send your selected details to Seetru and we can provide the full ordering code, price and lead-time.**

## Example of Valve Selection Process

Example Selection	Bronze	356	9.5	1/2"	NPT	NPT	Sealed Cap	PTFE	23.5 bar
	Body Material	Valve Type	Bore = 9.5mm	Inlet Size	Inlet Thread Type	Outlet Thread Type	Top Fitting	Seal	Set Pressure

# Capacity Table - In accordance with TÜV, AIR at 0°C and 1013mbar. Normal m³/hour

## Type 346/356: Flow rates at 10% above the set pressure



Set Pressure		Bore Size (D0)				
		9.5mm				
bar	psi	Nm³/Hour				
0.83	12.04	54.8				
1.0	14.50	61.2				
2.0	29.00	93.0				
3.0	43.50	125.0				
4.0	58.00	183.0				
5.0	72.50	220.0				
6.0	87.00	257.0				
7.0	101.50	294.5				
8.0	116.00	331.7				
9.0	130.50	369.0				
10.0	145.00	406.0				
15.0	217.50	592.0				
20.0	290.00	778.0				
25.0	362.50	964.0				
30.0	435.00	1149.6				
30.76	446.02	1178.0				

For any intermediate pressures/flows please contact Seetru



# Enclosed Discharge Safety Relief Valves

Seetru Limited

for compressed air or gases

cryogenic & liquefied gas

refrigeration

hydrogen

## Type 329

Safety valves with either Bronze or Stainless Steel body <  
Enclosed discharge valve with threaded connections <

### Example Applications

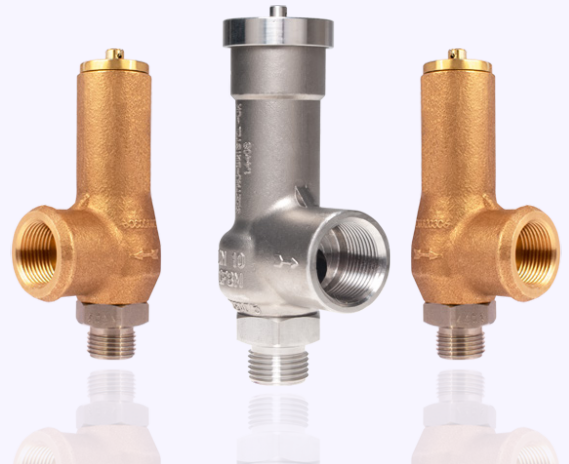
- Air/Gas systems
- Natural Gas
- CNG/LNG
- Pressure vessels
- Medical gases
- Technical Gases
- CO2 refrigeration
- Ammonia refrigeration (Stainless steel)
- Cryogenic applications
- Liquefied gases

### Specifications

- Inlet connections: 3/8" to 3/4"
- Temperature range: -196°C to +70°C
- Pressure range: 53.0 to 370.0 bar

### Materials of Construction

Component	Material	Grade
Inlet	Stainless Steel	1.4401 (316)
Body	Bronze	C83600
	Stainless Steel	1.4408 (316)
Internal Parts	Brass	BS EN 12164 CW614N
	Stainless Steel	1.4401 (316)
Spring	Stainless Steel	1.4310 (302)



### Approvals

- Designed in accordance with BS EN ISO-4126-1 & -7
- PED 2014/68/EU (CE)
- PE(S)R UK SI 2016 No. 1105 (UKCA)
- ASME BPVC VIII.1 & XIII (UV)
- EAC
- CRN



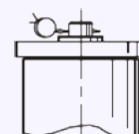
### Seal Materials

Seal Material	Temperature Range
PTFE (up to 202 bar) PPS (202 to 370 bar)	-196°C to +70°C

Standard seal materials shown, others are available.

### Top Fitting Options

- **Standard Option**  
Sealed Cap (gas tight cap)

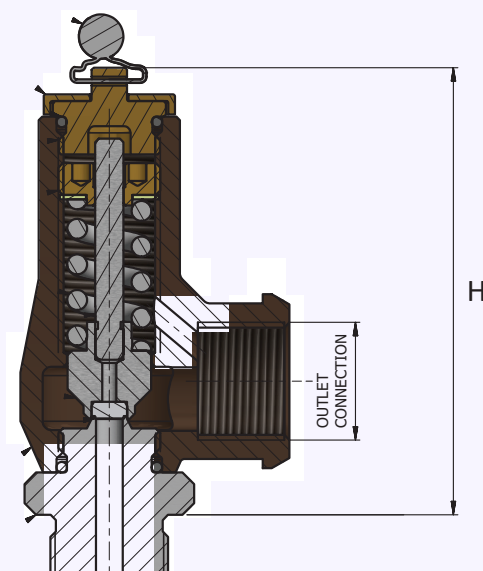


## Technical information by bore size

Bore size	6mm		
Inlet Size	3/8"	1/2"	3/4"
Outlet Size	3/4"		
Flow Area	28.2mm <sup>2</sup>		
H - Height	100mm (53.0 to 240.0 bar) 114mm (240.0 to 370.0 bar)		
TÜV allotted outflow coefficient	0.77		
NB Certified rated slope (ASME)	0.7scfm/psia		
Weight (approximate) Kg	0.8		
Set Pressure range - PED (CE) bar	53.0 to 370.0		
Set Pressure range - ASME (UV) psi	768.5 to 5365.0		
Relieving pressure/fully open pressure	Set pressure +10%		
Reseating pressure	Set pressure -15%		

Maximum permissible built up back pressure = 10% of set pressure at or below which flow is not reduced.

## Valve drawing



## Standard Thread Connection Types

- BSP Parallel male thread
- BSP Taper male thread
- NPT male thread

## Standard Outlet Connection Types

- BSP Parallel female thread
- NPT female thread

## Valve Selection Guide

Valve Type	Body Material	Approval Required	Select Bore	Inlet Size	Inlet Thread Type	Outlet Thread Type	Easing Gear	Seal Material
329	Stainless Steel	<b>PED (CE)</b>	6mm	Select inlet size from above table	Select Inlet thread type	Select Outlet thread type	Sealed cap	PTFE
	Bronze	<b>PED (CE), ASME (UV, NB), CRN</b>						

EAC marking available upon request

Please send your selected details to Seetru and we can provide the full ordering code, price and lead-time


## Example of Valve Selection Process

Example Selection	Bronze	329	PED (CE)	6	1/2"	NPT	NPT	Sealed Cap	PTFE	175 bar
	Body Material	Valve Type	Approval	Bore = 6mm	Inlet Size	Inlet Thread Type	Outlet Thread Type	Top Fitting	Seal	Set Pressure



## Capacity Table - In accordance with TÜV, AIR at 0°C and 1013mbar. Normal m³/hour Type 329: Flow rates at 10% above the set pressure




Set Pressure		Bore Size (D0)				
						
		6mm				
bar	psi	Nm³/Hour				
53	768.5	879.6				
60	870.0	993.8				
70	1015.0	1156.9				
80	1160.0	1320.0				
90	1305.0	1483.1				
100	1450.0	1646.3				
150	2175.0	2461.9				
200	2900.0	3277.5				
250	3625.0	4093.1				
300	4350.0	4908.7				
350	5075.0	5724.4				
370	5365.0	6050.6				

For any intermediate pressures/flows please contact Seetru

## Capacity Table - In accordance with ASME BPVC.XIII, AIR at 60°F and 14.7 psia/scfm. SCFM Type 329: Flow rates at 10% above the set pressure



Set Pressure		Bore Size (D0)				
						
		6mm				
psi	bar	SCFM				
768.5	53	602				
870	60	680				
913.5	63	714				
1203.5	83	937				
1305	90	1015				
1450	100	1127				
2175	150	1685				
2900	200	2243				
2929	202	2266				
3480	240	2690				
3625	250	2802				
4350	300	3360				
5075	350	3918				
5365	370	4141				

For any intermediate pressures/flows please contact Seetru

# Enclosed Discharge Safety Relief Valves

Seetru Limited

for compressed air or gases

steam

cryogenics & liquefied gases

hydrogen

## Type 936 Threaded

Safety valves made with brass inlets<  
Enclosed discharge valve with threaded connections<  
Metal to metal sealing<

### Example Applications

- Air / gas compressors
- Pressure vessels
- Medical gases/Technical gases
- Thermal relief
- Steam systems

### Specifications

- Inlet connections: 1/2" to 2" threaded connections (depending on valve bore size) (for flanged connections see 946 Flanged datasheet).
- Temperature range: -196°C to +250°C (depending on body o'ring material)
- Pressure range: 0.3 to 28.0 bar (depending on valve bore size)

### Materials of Construction

Component	Material	Grade
Inlet	Brass	CZ132 / CW602N
Outlet Body (10mm bore valve)	Bronze	SB-62 C8360
Outlet Body (15, 20 & 25mm bore valves)	Stainless Steel	1.4408 (316)
Spring	Stainless Steel	1.4310 (302)
Disc	Stainless Steel	1.4401 (316)

### Approvals

- Designed in accordance with BS EN ISO-4126-1 &-7
- PED 2014/68/EU (CE)
- PE(S)R UK SI 2016 No. 1105 (UKCA)
- EAC
- Leak tightness at 90% set pressure to API 527 and in accordance with EN ISO 4126-1
- Materials meet the requirements of BAM (Germany) for oxygen service

CE UK EAC

### Seal Materials

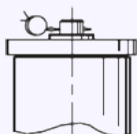
This valve using metal to metal sealing. There is a choice of o'ring used for the sealed cap/lever.

O'ring material	Temperature Range
Viton® (FKM)	-20°C to +250°C
Nitrile (NBR)	-196°C to +150°C
Silicone	-50°C to +250°C
PTFE	-196°C to +250°C
EPDM	-40°C to +150°C

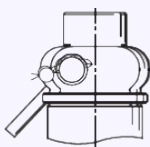
-196°C is only suitable for sealed cap/sealed lever valves  
Standard seal materials shown, others are available.

### Easing Gear / Lifting Gear / Top Fitting Options

- Sealed Cap (gas tight cap)



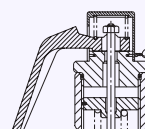
- Sealed lever (gas tight)



- Rota-lift (not gas tight)



- Open Lever (not gas tight)



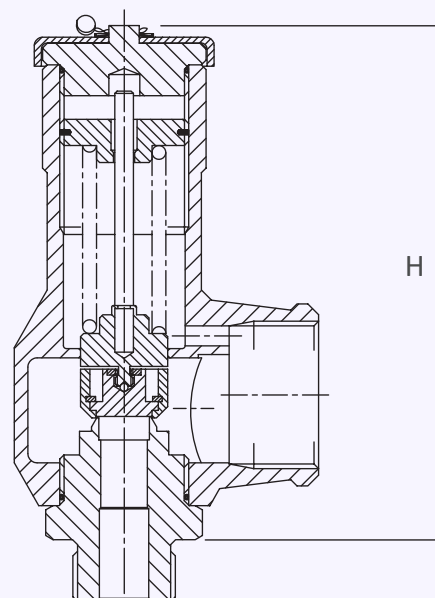


## Technical information by bore size

Bore size	10mm (93610)			15mm (93615)			20mm (93620)			25mm (93625)			
Inlet Size	1/2"	3/4"	1"	1"	1 1/4"	1 1/2"	1"	1 1/4"	1 1/2"	1"	1 1/4"	1 1/2"	2"
Outlet Size	1"			1 1/2"			2"			2"			
Flow Area	78.5mm²			177mm²			314mm²			491mm²			
H - Height (Sealed Lever version)	114mm			168mm			141mm			225mm			
TÜV allotted outflow coefficient	0.83 (above 3.0 bar)			0.74 (above 3.0 bar)			0.8 (above 4.0 bar)			0.8 (above 4.0 bar)			
Weight (approximate) Kg	1.0			2.1			3.5			4.2			
Set Pressure range - PED (CE) bar	0.3 to 28.0			0.3 to 28.0			0.3 to 28.0			0.3 to 20.0			
Relieving pressure/fully open pressure	Set pressure +10% (0.1 bar below 1.0 bar)												
Reseating pressure	Set pressure -10% (0.3 bar below 3.0 bar)												

- TÜV allotted outflow coefficients for pressures above 3.0/4.0 bar, for lower pressures please see the flow rate tables or contact Seetru.
- Maximum permissible built up back pressure = 10% of set pressure at or below which flow is not reduced.
- Stable operation on flows down to 50% of valve rated capacity.
- Leak tightness at 90% set pressure to API 527 and in accordance with EN ISO 4126-1

## Valve Drawing



## Standard INLET Connection Types

- BSP parallel male thread
- BSP taper male thread
- NPT male thread
- BSP parallel female thread (limited option)

## Standard OUTLET Connection Types

- BSP parallel female thread

## Valve Selection Guide

Valve type	Select Bore	Inlet Size	Inlet Thread Type	Top Fitting	O'ring material (for cap)	Set pressure
936	Select bore size from above table	Select inlet size from above table	Select Inlet Thread type	Select easing gear/top fitting	See table	Set pressure from available range

EAC marking available upon request

**\*Please send your selected details to Seetru and we can provide the full ordering code, price and lead-time.**

## Example of Valve Selection Process

Example Selection	936	15	1"	BSP parallel	Rota Lift	Viton	17.5 bar
	Valve Type	Bore = 15mm	Inlet Size	Inlet Thread Type	Top Fitting	O'ring	Set Pressure

## Capacity Table - In accordance with TÜV, AIR at 0°C and 1013mbar. Normal m³/hour Type 936: Flow rates at 10% above the set pressure



Set Pressure		Bore Size (D0)				
		10mm	15mm	20mm	25mm	
bar	psi	Nm³/Hour	Nm³/Hour	Nm³/Hour	Nm³/Hour	
0.3	4.35	39	76	174	220	
0.5	7.25	56	104	238	304	
1	14.5	84	155	354	458	
2	29	135	270	554	838	
3	43.5	191	384	738	1154	
4	58	240	482	926	1448	
5	72.5	289	580	1115	1742	
6	87.00	338	678	1303	2036	
7	101.5	386	776	1491	2330	
8	116	425	874	1679	2625	
9	130.5	484	972	1868	2919	
10	145	533	1070	2056	3213	
15	217.5	777	1560	2998	4685	
20	290	1021	2049	3939	5848	
25	362.5	1266	2539	4881		
28	406	1412	2833	5446		

For any intermediate pressures/flows please contact Seetru

## Capacity Table - In accordance with TÜV, STEAM. Kg/hour Type 936: Flow rates at 10% above the set pressure



Set Pressure		Bore Size (D0)				
		10mm	15mm	20mm	25mm	
bar	psi	Kg/hour of Steam	Kg/hour of Steam	Kg/hour of Steam	Kg/hour of Steam	
0.3	4.35	32.5	63.3	145.3	182.3	
0.5	7.25	44.5	82.5	188.7	242.2	
1	14.5	66.1	121.7	278.4	361.9	
2	29	106.2	213.4	437.8	663.0	
3	43.5	149	299	576	901	
4	58	186	373	718	1122	
5	72.5	222	446	860	1343	
6	87.00	259	520	1000	1563	
7	101.5	295	592	1142	1784	
8	116	332	666	1283	2004	
9	130.5	368	738	1423	2224	
10	145	405	812	1563	2442	
15	217.5	585	1174	2261	3533	
20	290	765	1535	2957	4389	
25	362.5	947	1900	3655		
28	406	1055	2116	4078		

For any intermediate pressures/flows please contact Seetru



# Enclosed Discharge Safety Relief Valves

Seetru Limited

for compressed Air & Gas

hydrogen

cryogenic & liquefied gas

## Type 636 / 631

Safety valves with bronze body <  
Enclosed discharge valve with threaded connections <

### Example Applications

- Air / gas compressors
- Pressure vessels
- Pneumatic systems
- Medical gases
- Technical gases

### Specifications

- Inlet connections: 3/8" to 2" (depending on bore size)
- Temperature: -40°C to +200°C (depending on seal material)
- Pressure range: 0.32 to 55.2 bar (depending on bore size)

### Materials of Construction

Component	Material	Grade
Inlet	Brass	CW614N
	Stainless Steel	1.4401 (316)
Body	Bronze	CC491K SB-62 C83600
Internal parts	Brass	CW614N
	Stainless Steel	1.4401 (316)
Spring	Stainless Steel	1.4310 (302)

### Approvals

- Designed in accordance with BS EN ISO-4126-1 &-7
- PED 2014/68/EU (CE)
- PE(S)R UK SI 2016 No. 1105 (UKCA)
- ASME BPVC VIII.1 & XIII (UV)
- CRN
- EAC



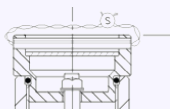
### Seal Materials

Seal Material	Temperature Range
Viton® (FKM)	-15°C to +200°C
Nitrile (NBR)	-40°C to +120°C

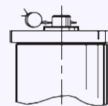
Standard seal materials shown, others are available.

### Easing Gear / Lifting Gear Options

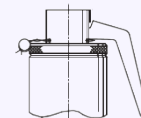
- **Standard option:**  
Rota-lift, twist type  
(not gas tight)



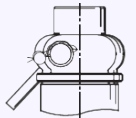
- **Other Options:**



Sealed Cap (gas tight cap)



Unsealed lever (not gas tight)



Sealed lever (gas tight)

## Technical information by bore size

Bore size	9.5/10mm			13.7mm			17mm			20mm			25mm		
Inlet Size	3/8"	1/2"	3/4"	1/2"	3/4"	1"	1"	1 1/4"	1 1/2"	1"	1 1/4"	1 1/2"	1 1/4"	1 1/2"	2"
Outlet Size	3/4"			1"			1 1/2"			2"			2"		
Flow Area	70.9mm <sup>2</sup> (above 1.55 bar)			147.7mm <sup>2</sup>			227mm <sup>2</sup>			314mm <sup>2</sup>			490.4mm <sup>2</sup>		
H - Height (Rota-lift cap version)	102mm (up to 33 bar) 116mm (33-55.2 bar)			143mm (up to 35 bar) 172.5mm (35-49 bar)			204mm			227mm			252mm		
TÜV allotted outflow coefficient	0.78			0.71			0.74 (1.0 to 2.4 bar) 0.84 (2.4 to 35.0 bar)			0.76 (3.0 to 22.0 bar) 0.80 (22.0 to 35.0 bar)			0.85		
NB Certified rated slope (ASME)	1.74 scfm/psia			3.47 scfm/psia			5.60 scfm/psia			7.77 scfm/psia			12.26 scfm/psia		
Weight (approximate) Kg	0.8			1.1			3.6			4.0			5.1		
Set Pressure range - PED (CE) bar	0.48 to 55.2			0.32 to 49.0			1.0 to 35.0			3.0 to 35.0			5.65 to 30.0		
Set Pressure range - ASME (UV) psi	22.5 to 800.4			20.3 to 710.5			34.8 to 507.5			43.5 to 507.5			82.0 to 435.0		
Relieving pressure/fully open pressure	Set Pressure +10%														
Reseating pressure	Set Pressure -10% (0.3 bar minimum)														

Maximum permissible built up back pressure = 10% of set pressure at or below which flow is not reduced.  
Stable operation on flows down to 50% of valve rated capacity.

## Standard Thread Connection Types

- BSP Parallel male thread
- BSP Taper male thread
- NPT male thread

## Standard Outlet Connection Types

- BSP Parallel female thread
- NPT female thread

## Valve Selection Guide

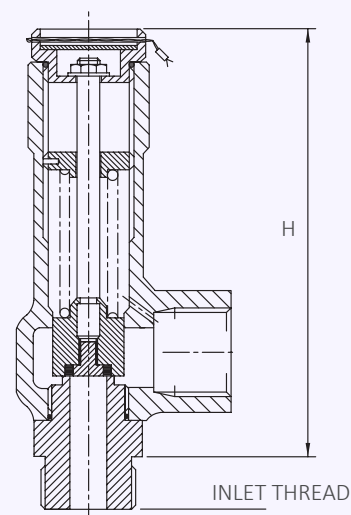
Approval Required	Valve type	Select Bore	Inlet Size	Thread Type	Outlet Thread Type	Easing Gear	Seal Material
PED (CE)	636 (Brass inlet)	Select bore size from above table	Select inlet size from above table	Select Inlet thread type	Select Outlet thread type	Select easing gear/top fitting	Viton® (FKM)
	656 (St. Steel inlet)						Nitrile (NBR)
PED (CE), ASME (UV) & CR	631 (Brass inlet)						Other
	651 (St. Steel inlet)						

EAC marking available upon request

**\*Please send your selected details to Seetru and we can provide the full ordering code, price and lead-time.**

## Example of Valve Selection Process

Example Selection	CE/PED	636	20	1 1/2"	BSP Taper	BSP parallel	Rota-lift	Viton	10.5 bar
	Approval	Valve Type	Bore = 20mm	Inlet Size	Inlet Thread Type	Outlet Thread Type	Easing Gear	Seal	Set Pressure



Capacity Table - In accordance with TÜV, AIR at 0°C and 1013mbar. Normal m³/hour  
Type 636/656: Flow rates at 10% above the set pressure



Set Pressure		Bore Size (D0)				
		9.5mm	13.7mm	17mm	20mm	25mm
bar	psi	Nm³/Hour	Nm³/Hour	Nm³/Hour	Nm³/Hour	Nm³/Hour
0.32	4.64		114.2			
0.48	6.96	48.9	124.5			
1	14.5	76.9	164.9	241.8		
2	29	121.0	229.1	367.6		
3	43.5	162.4	307.5	560.2	701.4	
4	58	203.8	385.9	703.0	880.3	
5	72.5	245.3	464.3	845.9	1059.2	
5.65	81.93	272.2	515.3	938.7	1175.5	2054.3
6	87	286.7	542.7	988.7	1238.2	2163.7
7	101.5	328.1	621.2	1131.6	1417.0	2476.4
8	116	369.5	699.6	1274.5	1596.0	2789.0
9	130.5	410.9	778.0	1417.3	1774.9	3101.7
10	145	452.4	856.4	1560.2	1953.8	3414.3
15	217.5	659.5	1248.5	2274.5	2848.2	4977.5
20	290	866.6	1640.6	2988.7	3742.8	6540.7
25	362.5	1073.8	2032.7	3703.0	4881.2	8103.9
30	435	1280.9	2424.8	4417.3	5823.0	9667.1
35	507.5	1488.1	2816.9	5131.6	6764.6	
40	580	1695.2	3209.0			
45	652.5	1902.3	3601.1			
49	710.5	2068.0	3914.8			
50	725	2109.4				
55.2	800.4	2324.8				

For any intermediate pressures/flows please contact Seetru

Capacity Table - In accordance with ASME BPVC.XIII, AIR at 60°F and 14.7 psia/scfm. SCFM  
Type 631/651: Flow rates at 10% above the set pressure



Set Pressure		Bore Size (D0)				
		9.5mm	13.7mm	17mm	20mm	25mm
psi	bar	SCFM	SCFM	SCFM	SCFM	SCFM
20.3	1.40		131.9			
22.5	2.50	68.7	139.4			
30	2.07	81.5	165.5			
34.8	2.80	90.6	183.8	296.7		
40	2.76	100.4	203.7	328.7		
43.5	3.00	106.9	217.0	350.2	486.0	
50	3.45	119.2	241.8	390.3	541.5	
82	5.66	179.3	363.9	587.3	814.9	1285.8
100	6.90	213.2	432.6	698.1	968.7	1528.4
150	10.34	307.2	623.4	1006.1	1395.9	2202.6
200	13.79	401.2	814.2	1314.0	1823.2	2876.8
250	17.24	495.3	1005.0	1621.9	2250.4	3550.8
300	20.69	589.3	1195.8	1929.8	2677.6	4224.9
350	24.14	683.3	1386.6	2237.8	3104.9	4899.1
400	27.59	777.4	1577.4	2545.7	3532.2	5573.3
435	30.00	843.2	1711.0	2761.2	3831.2	6045.2
450	31.03	871.4	1768.2	2853.6	3959.3	
500	34.48	965.4	1959.0	3161.5	4386.6	
507.5	35.00	979.5	1987.6	3207.7	4450.7	
550	37.93	1059.4	2149.8			
600	41.38	1153.4	2340.6			
650	44.83	1247.5	2531.4			
700	48.28	1341.5	2722.2			
710.5	49.00	1361.3	2762.3			
750	51.72	1435.5				
800.4	55.20	1530.3				

For any intermediate pressures/flows please contact Seetru

# Enclosed Discharge Safety Relief Valves

Seetru Limited

for compressed Air & Gas

hydrogen

## Type 646 / 641

Safety valves with Stainless Steel body <  
Enclosed discharge valve with threaded connections <

### Example Applications

- Air / gas compressors
- Pressure vessels
- Pneumatic systems
- Medical gases
- Technical gases

### Specifications

- Inlet connections: 3/8" to 2" (depending on bore size)
- Temperature: -40°C to +200°C (depending on seal material)
- Pressure range: 0.32 to 55.2 bar (depending on bore size)

### Materials of Construction

Component	Material	Grade
Inlet	Stainless Steel	1.4401 (316)
Body	Stainless Steel	1.4408 (316)
Internal Parts	Stainless Steel	1.4401 (316)
Spring	Stainless Steel	1.4310 (302)

### Approvals

- Designed in accordance with BS EN ISO-4126-1 &-7
- PED 2014/68/EU (CE)
- PE(S)R UK SI 2016 No. 1105 (UKCA)
- ASME BPVC VIII.1 & XIII (UV)
- CRN
- EAC



### Seal Materials

Seal Material	Temperature Range
Viton® (FKM)	-15°C to +200°C
Nitrile (NBR)	-40°C to +120°C

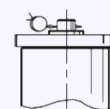
Standard seal materials shown, others are available.

### Easing Gear / Lifting Gear Options

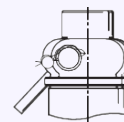
- **Standard option:** Rota-lift cap, twist type (not gas tight)



- **Other Options:**



Sealed Cap (gas tight cap)



Sealed lever (gas tight)



## Technical information by bore size

Bore size	9.5/10mm			13.7mm			17mm			20mm			25mm		
Inlet Size	3/8"	1/2"	3/4"	1/2"	3/4"	1"	1"	1 1/4"	1 1/2"	1"	1 1/4"	1 1/2"	1 1/4"	1 1/2"	2"
Outlet Size	3/4"			1"			1 1/2"			2"			2"		
Flow Area	70.9mm <sup>2</sup> (above 1.55 bar)			147.7mm <sup>2</sup>			227mm <sup>2</sup>			314mm <sup>2</sup>			490.4mm <sup>2</sup>		
H - Height (Rota-lift cap version)	116mm			143mm (up to 35 bar) 172.5mm (35-49 bar)			211mm			227mm			252mm		
TÜV allotted outflow coefficient	0.78			0.71			0.74 (1.0 to 2.4 bar) 0.84 (2.4 to 35.0 bar)			0.76 (3.0 to 22.0 bar) 0.80 (22.0 to 35.0 bar)			0.85		
NB Certified rated slope (ASME)	1.74 scfm/psia			3.47 scfm/psia			5.60 scfm/psia			7.77 scfm/psia			12.26 scfm/psia		
Weight (approximate) Kg	0.8			1.1			3.6			4.0			5.1		
Set Pressure range - PED (CE) bar	0.48 to 55.2			0.32 to 49.0			1.0 to 35.0			3.0 to 35.0			5.65 to 30.0		
Set Pressure range - ASME (UV) psi	22.5 to 800.4			20.3 to 710.5			34.8 to 507.5			43.5 to 507.5			82.0 to 435.0		
Relieving pressure/fully open pressure	Set Pressure +10%														
Reseating pressure	Set Pressure -10%														

Maximum permissible built up back pressure = 10% of set pressure at or below which flow is not reduced.  
Stable operation on flows down to 50% of valve rated capacity.

## Standard Thread Connection Types

- BSP Parallel male thread
- BSP Taper male thread
- NPT male thread

## Standard Outlet Connection Types

- BSP Parallel female thread
- NPT female thread

## Valve Selection Guide

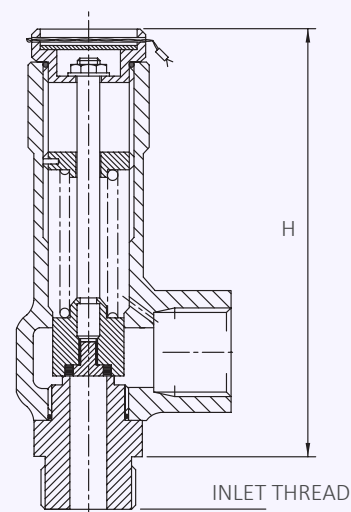
Approval Required	Valve type	Select Bore	Inlet Size	Inlet Thread Type	Outlet Thread Type	Easing Gear	Seal Material
PED (CE)	646	Select bore size from above table	Select inlet size from above table	Select Inlet thread type	Select Outlet thread type	Select easing gear/top fitting	Viton® (FKM)
PED (CE), ASME (UV) & CRN	641						Nitrile (NRB)
							Other

EAC marking available upon request

**\*Please send your selected details to Seetru and we can provide the full ordering code, price and lead-time.**

## Example of Valve Selection Process

Example Selection	PED, ASME & CRN	641	20	1 1/2"	BSP Taper	BSP parallel	Rota-lift	Viton	10.5 bar
	Approval	Valve Type	Bore = 20mm	Inlet Size	Inlet Thread Type	Outlet Thread Type	Easing Gear	Seal	Set Pressure



Capacity Table - In accordance with TÜV, AIR at 0°C and 1013mbar. Normal m³/hour  
Type 646: Flow rates at 10% above the set pressure



Set Pressure		Bore Size (D0)				
		9.5mm	13.7mm	17mm	20mm	25mm
bar	psi	Nm³/Hour	Nm³/Hour	Nm³/Hour	Nm³/Hour	Nm³/Hour
0.32	4.64		114.2			
0.48	6.96	48.9	124.5			
1	14.5	76.9	164.9	241.8		
2	29	121.0	229.1	367.6		
3	43.5	162.4	307.5	560.2	701.4	
4	58	203.8	385.9	703.0	880.3	
5	72.5	245.3	464.3	845.9	1059.2	
5.65	81.93	272.2	515.3	938.7	1175.5	2054.3
6	87	286.7	542.7	988.7	1238.2	2163.7
7	101.5	328.1	621.2	1131.6	1417.0	2476.4
8	116	369.5	699.6	1274.5	1596.0	2789.0
9	130.5	410.9	778.0	1417.3	1774.9	3101.7
10	145	452.4	856.4	1560.2	1953.8	3414.3
15	217.5	659.5	1248.5	2274.5	2848.2	4977.5
20	290	866.6	1640.6	2988.7	3742.8	6540.7
25	362.5	1073.8	2032.7	3703.0	4881.2	8103.9
30	435	1280.9	2424.8	4417.3	5823.0	9667.1
35	507.5	1488.1	2816.9	5131.6	6764.6	
40	580	1695.2	3209.0			
45	652.5	1902.3	3601.1			
49	710.5	2068.0	3914.8			
50	725	2109.4				
55.2	800.4	2324.8				

For any intermediate pressures/flows please contact Seetru

Capacity Table - In accordance with ASME BPVC.XIII, AIR at 60°F and 14.7 psia/scfm. SCFM  
Type 641: Flow rates at 10% above the set pressure



Set Pressure		Bore Size (D0)				
		9.5mm	13.7mm	17mm	20mm	25mm
psi	bar	SCFM	SCFM	SCFM	SCFM	SCFM
20.3	1.40		131.9			
22.5	2.50	68.7	139.4			
30	2.07	81.5	165.5			
34.8	2.80	90.6	183.8	296.7		
40	2.76	100.4	203.7	328.7		
43.5	3.00	106.9	217.0	350.2	486.0	
50	3.45	119.2	241.8	390.3	541.5	
82	5.66	179.3	363.9	587.3	814.9	1285.8
100	6.90	213.2	432.6	698.1	968.7	1528.4
150	10.34	307.2	623.4	1006.1	1395.9	2202.6
200	13.79	401.2	814.2	1314.0	1823.2	2876.8
250	17.24	495.3	1005.0	1621.9	2250.4	3550.8
300	20.69	589.3	1195.8	1929.8	2677.6	4224.9
350	24.14	683.3	1386.6	2237.8	3104.9	4899.1
400	27.59	777.4	1577.4	2545.7	3532.2	5573.3
435	30.00	843.2	1711.0	2761.2	3831.2	6045.2
450	31.03	871.4	1768.2	2853.6	3959.3	
500	34.48	965.4	1959.0	3161.5	4386.6	
507.5	35.00	979.5	1987.6	3207.7	4450.7	
550	37.93	1059.4	2149.8			
600	41.38	1153.4	2340.6			
650	44.83	1247.5	2531.4			
700	48.28	1341.5	2722.2			
710.5	49.00	1361.3	2762.3			
750	51.72	1435.5				
800.4	55.20	1530.3				

For any intermediate pressures/flows please contact Seetru

# Enclosed Discharge Safety Relief Valves

Seetru Limited

for compressed air & gas

hydrogen

## Type B4605 / B6605 / 359

Safety valves made from Stainless Steel <  
Enclosed discharge valve with threaded connections <

### Example Applications

- Air/Gas compressors
- Natural Gas
- Pressure vessels
- Medical gases
- Technical Gases
- Hydrogen production/generation

### Specifications

- Inlet connections: 3/8" and 1/2"
- Temperature range:
  - 0°C to 200°C (with 1.4057 (431) stainless steel inlet)
  - -50°C to 150°C (with 1.4401 (316) stainless steel inlet)
- Pressure range: 35.0 to 500.0 bar

### Materials of Construction

Component	Material	Grade
Inlet	Stainless Steel	1.4057 (431)
		1.4401 (316)
Body	Stainless Steel	1.4408 (316)
Internal Parts	Stainless Steel	1.4305 (303)
Spring	Stainless Steel	1.4310 (302)

### Approvals

- Designed in accordance with BS EN ISO-4126-1 &-7
- PED 2014/68/EU (CE)
- PE(S)R UK SI 2016 No. 1105 (UKCA)
- ASME BPVC VIII.1 & XIII (UV)
- EAC
- CRN



### Inlet Seat Material

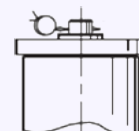
**This valve seals using a metal ball design**

Seal Material	Temperature Range
Stainless steel 1.4057 (431)	0°C to +200°C
Stainless steel 1.4401 (316)	-50C to +150°C

Standard seal materials shown, others are available.

### Top Fitting Options

- **Standard Option**  
Sealed Cap (gas tight cap)

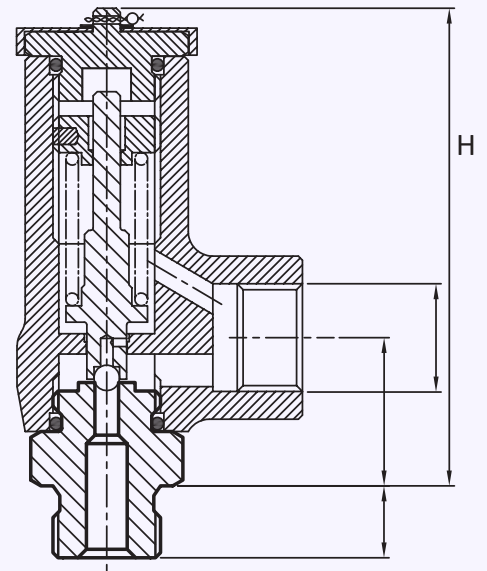


## Technical information by bore size

Bore size	4.6mm	
Inlet Size	3/8"	1/2"
Outlet Size	1/2"	
Flow Area	16.6mm <sup>2</sup>	
H - Height	96mm	
TÜV allotted outflow coefficient	0.402	
NB Certified rated slope (ASME)	0.34 scfm/psia	
Weight (approximate) Kg	0.8	
Set Pressure range - PED (CE) bar	35.0 to 500.0	
Set Pressure range - ASME (UV) psi	507.5 to 7250.0	
Relieving pressure/fully open pressure	Set pressure +10%	
Reseating pressure	Set pressure -10%	

Maximum permissible built up back pressure = 10% of set pressure at or below which flow is not reduced

## Valve drawing



### IMPORTANT NOTE:

These valves should only be tested for set pressure on liquid prior to final installation. Valves that are tested on air & fully lifted will cause damage to the sealing face.

## Standard Thread Connection Types

- BSP Parallel male thread
- BSP Taper male thread
- NPT male thread

## Standard Outlet Connection Types

- BSP Parallel female thread
- NPT female thread

## Valve Selection Guide

Valve Type	Inlet Material	Approval Required (Available for both Inlet materials)	Select Bore	Inlet Size	Inlet Thread Type	Outlet Thread Type	Easing Gear	Seal Material
B6605	Stainless Steel 1.4057 (431)	PED (CE)	4.66mm	Select inlet size from above table	Select Inlet thread type	Select Outlet thread type	Sealed cap	Metal ball seal
B4405	Stainless Steel 1.4401 (316)	PED (CE)						
B6105	Stainless Steel 1.4057 (431)	PED (CE), ASME (UV, NB), CRN						
B4105	Stainless Steel 1.4401 (316)	PED (CE), ASME (UV, NB), CRN						

EAC marking available upon request

\*Please send your selected details to Seetru and we can provide the full ordering code, price and lead-time.

## Example of Valve Selection Process

Example Selection	1.4057 (431)	359	PED (CE)	4.66	1/2"	BSP taper	BSP	Sealed Cap	Ball Seal	385 bar
	Inlet Material	Valve Type	Approval	Bore = 4.6mm	Inlet Size	Inlet Thread Type	Outlet Thread Type	Top Fitting	Seal	Set Pressure



## Capacity Table - In accordance with TÜV, AIR at 0°C and 1013mbar. Normal m³/hour Flow rates at 10% above the set pressure



Set Pressure		Bore Size (D0)				
		4.6mm				
bar	psi	Nm³/Hour				
35	507.5	179.8				
50	725.0	254.9				
100	1450.0	505.2				
150	2175.0	755.5				
200	2900.0	1005.8				
250	3625.0	1256.0				
300	4350.0	1506.3				
350	5075.0	1756.6				
400	5800.0	2006.9				
450	6525.0	2257.2				
500	7250.0	2507.5				

For any intermediate pressures/flows please contact Seetru

## Capacity Table - In accordance ASME section VIII Div I, AIR at 60°F and 14.7 psia/scfm. SCFM Flow rates at 10% above the set pressure



Set Pressure		Bore Size (D0)				
		4.6mm				
psi	bar	SCFM				
507.5	35	195				
725	50	276				
1450	100	547				
2175	150	818				
2900	200	1090				
3625	250	1361				
4350	300	1632				
5075	350	1903				
5800	400	2174				
6525	450	2445				
7250	500	2716				

For any intermediate pressures/flows please contact Seetru

# Enclosed Discharge Safety Relief Valves

Seetru Limited

for compressed air or gases

steam

refrigeration

hydrogen

## Type 946 Flanged

Safety valves made from Stainless Steel <  
Enclosed discharge valve with flanged connections <  
Metal to metal sealing <

### Example Applications

- Air / gas compressors
- Pressure vessels
- Medical gases/Technical gases
- Refrigeration (including ammonia)
- Thermal relief
- Steam systems
- Hydrogen

### Specifications

- Inlet connections: DN15 (1/2), DN20 (3/4") or DN25 (1")  
flange – DIN EN1092 and ANSI flanges are available
- Temperature range: -50°C to +250°C  
(depending on body o'ring material)
- Pressure range: 0.3 to 28.0 bar

### Approvals

- Designed in accordance with BS EN ISO-4126-1 &-7
- PED 2014/68/EU (CE)
- PE(S)R UK SI 2016 No. 1105 (UKCA)
- EAC
- Leak tightness at 90% set pressure to API 527 and in  
accordance with EN ISO 4126-1



### Materials of Construction

Component	Material	Grade
Inlet & Outlet Flanges	Stainless Steel	1.4401 (316)
Body	Stainless Steel	1.4408 (316)
Internal Parts	Stainless Steel	1.4401 (316)
Spring	Stainless Steel	1.4310 (302)
Disc	Stainless Steel	AISI 440B

### Seal Materials

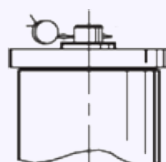
This valve using metal to metal sealing. There is a choice of o'ring used for the sealed cap/lever.

O'ring material – Top cap	Temperature Range
Viton® (FKM)	-20°C to +250°C
Nitrile (NBR)	-30°C to +150°C
Silicone	-50°C to +250°C
EPDM	-40°C to +150°C

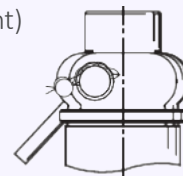
Standard seal materials shown, others are available.

### Easing Gear / Lifting Gear / Top Fitting Options

- Sealed Cap (gas tight cap)



- Sealed lever (gas tight)



## Technical information by bore size

Bore size	10mm (94610)			15mm (94615)
Inlet Size	DN15 (1/2")	DN20 (3/4")	DN25 (1")	DN25 (1")
Outlet Size	DN25 (1")			DN40 (1 1/2")
Flow Area	78.5mm <sup>2</sup>			177mm <sup>2</sup>
H - Height (Sealed Lever version)	200mm			253mm
TÜV allotted outflow coefficient	0.83 (above 3.0 bar)			0.74 (above 3.0 bar)
Weight (approximate) Kg	3.0			5.3
Set Pressure range - PED (CE) bar	0.3 to 28.0			0.3 to 28.0
Relieving pressure/fully open pressure	Set pressure +10% (0.1 bar below 1.0 bar)			
Reseating pressure	Set pressure -10% (0.3 bar below 3.0 bar)			

- TÜV allotted outflow coefficients for pressures above 3.0 bar, for lower pressures please see the flow rate tables or contact Seetru.
- Maximum permissible built up back pressure = 10% of set pressure at or below which flow is not reduced.
- Stable operation on flows down to 50% of valve rated capacity.
- Leak tightness at 90% set pressure to API 527 and in accordance with EN ISO 4126-1.

## Standard INLET Connection Types

- DIN EN1092 Flange PN16, PN25 or PN40
- ASME Flange CL150, CL300 or CL600

## Standard OUTLET Connection Types

- DIN EN1092 Flange PN16, PN25 or PN40
- ASME Flange CL150 or CL300

## Valve Selection Guide

Valve type	Select Bore	Inlet Size	Inlet Flange Type	Outlet Flange Type	Easing Gear	O'ring material (for cap)
946	Select bore size from above table	Select inlet size from above table	Select Inlet Flange type	Select Outlet Flange type	Select easing gear/top fitting	See table

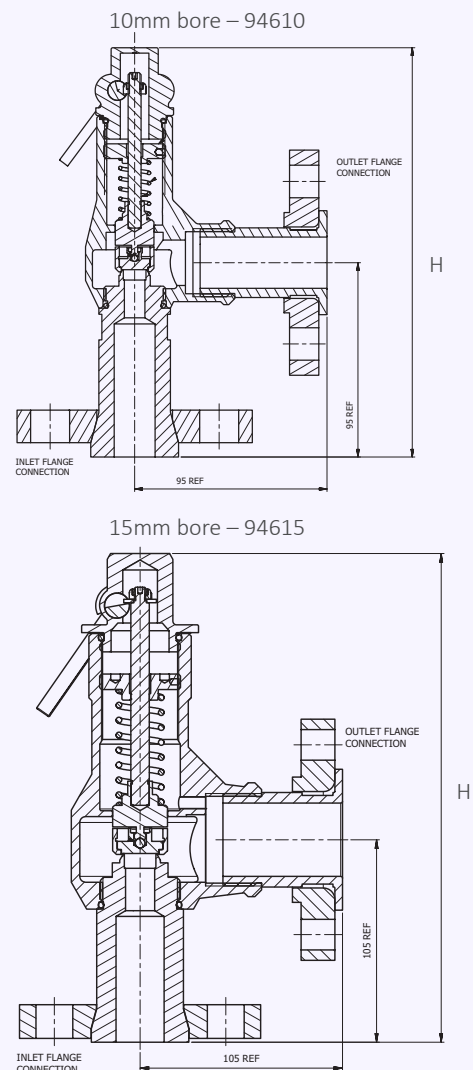
EAC marking available upon request

**\*Please send your selected details to Seetru and we can provide the full ordering code, price and lead-time.**

## Example of Valve Selection Process

Example Selection	946	10	DN20	DIN EN1092 Flange PN16	DIN EN1092 Flange PN16	Sealed Lever	Viton	10.5 bar	16.2 bar
	Valve Type	Bore = 10mm	Inlet Size	Inlet Flange Type	Outlet Flange Type	Top Fitting	O'ring	Set Pressure	Set Pressure

## Valve Drawing



## Capacity Table - In accordance with TÜV, AIR at 0°C and 1013mbar. Normal m³/hour Type 946: Flow rates at 10% above the set pressure



Set Pressure		Bore Size (D0)			
		10mm	15mm		
bar	psi	Nm³/Hour	Nm³/Hour		
0.3	4.35	39	76		
0.5	7.25	56	104		
1	14.5	84	155		
2	29	135	270		
3	43.5	191	384		
4	58	240	482		
5	72.5	289	580		
6	87.00	338	678		
7	101.5	386	776		
8	116	425	874		
9	130.5	484	972		
10	145	533	1070		
15	217.5	777	1560		
20	290	1021	2049		
25	362.5	1266	2539		
28	406	1412	2833		

For any intermediate pressures/flows please contact Seetru

## Capacity Table - In accordance with TÜV, STEAM. Kg/hour Type 946: Flow rates at 10% above the set pressure



Set Pressure		Bore Size (D0)			
		10mm	15mm		
bar	psi	Kg/hour of Steam	Kg/hour of Steam		
0.3	4.35	32.5	63.3		
0.5	7.25	44.5	82.5		
1	14.5	66.1	121.7		
2	29	106.2	213.4		
3	43.5	149	299		
4	58	186	373		
5	72.5	222	446		
6	87.00	259	520		
7	101.5	295	592		
8	116	332	666		
9	130.5	368	738		
10	145	405	812		
15	217.5	585	1174		
20	290	765	1535		
25	362.5	947	1900		
28	406	1055	2116		

For any intermediate pressures/flows please contact Seetru

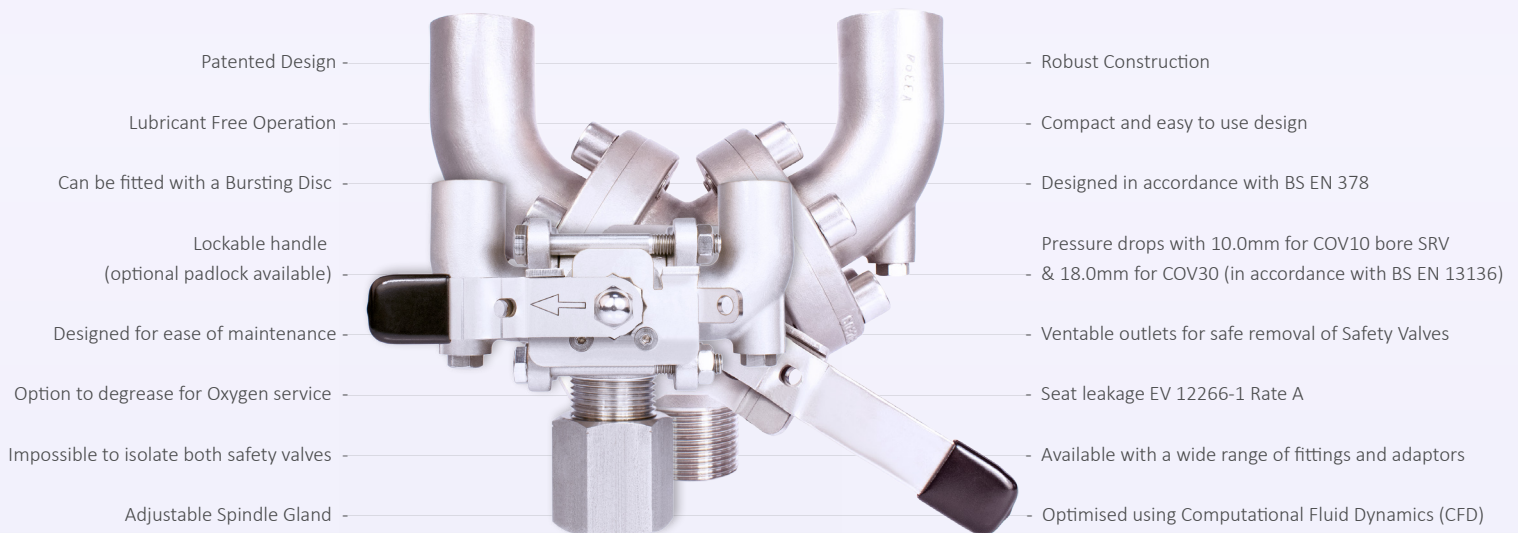


## COV10 / COV13 / COV30

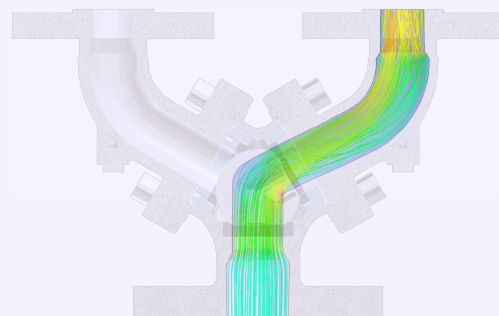
Solutions for plant and process efficiency

Change-over valves (sometimes referred to as selector valves or three-way valves) enables the switching of flow from one safety valve to another. Typically used where plant shutdown is impossible or undesirable for process, engineering or commercial reasons. With change-over valves it is possible to switch over between parallel safety valves without interrupting operation, so that maintenance work can be carried out on each safety valve in turn. Seetru change-over valves in combination with our safety valves provide the best solution for plant safety and efficiency. Seetru products are widely recognised for their exceptional quality and reliability.

### Features



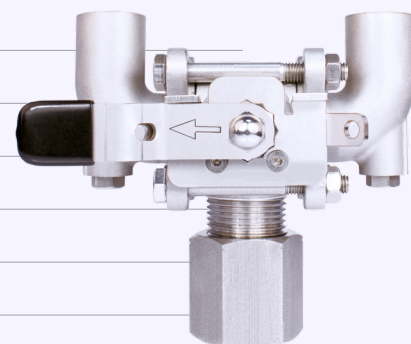
### Fluid Mahcanics



The Seetru Change-Over Valves were designed and developed using Computational Fluid Dynamics (CFD) in order to simulate and optimise the flow of the fluids through the valve.

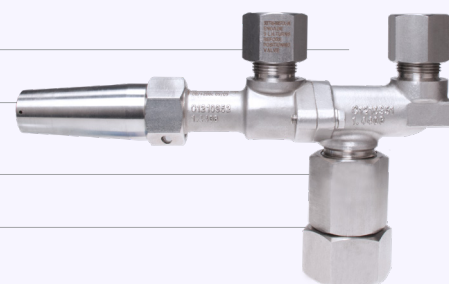
## Specifications: COV10

System Connections	½" to 1" BSP, BSPT & NPT
Valve Connectiond	½" NPT or 3/4" BSP (with or without orientators)
Change-Over Valve Kv	10.0 (Cv= 11.5)
Materials of Construction	Stainless Steel
Seat Materials	25% Carbon filled P.T.F.E.
Temperature Range	-196°C to +200°C
Max Design Pressure	75 bar
Material Certification	BS EN ISO10204 3.1 Pressure Retaining Parts (Optional Extra)
Safety Valve Orifice Size	Up to 10mm (Full Lift Type)
Maximum Safety Valve Set Pressure	75 bar



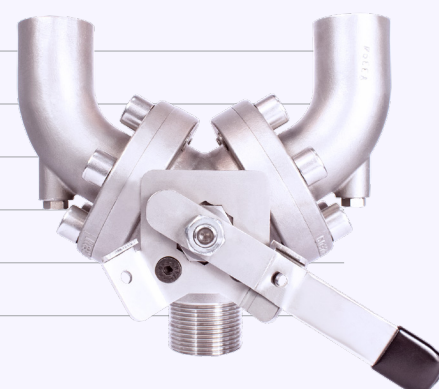
## Specifications: COV13

System Connections	Please contact Seetru for information
Valve Connections	Please contact Seetru for information
Materials of Construction	Stainless Steel with Mild Steel or Stainless Steel Internals
Seat Materials	Elastomer P.T.F.E
Maxium Safety valve Set Pressure	65.0 bar
Temperature Range	-30 °C to 200 °C (subject to seal material)



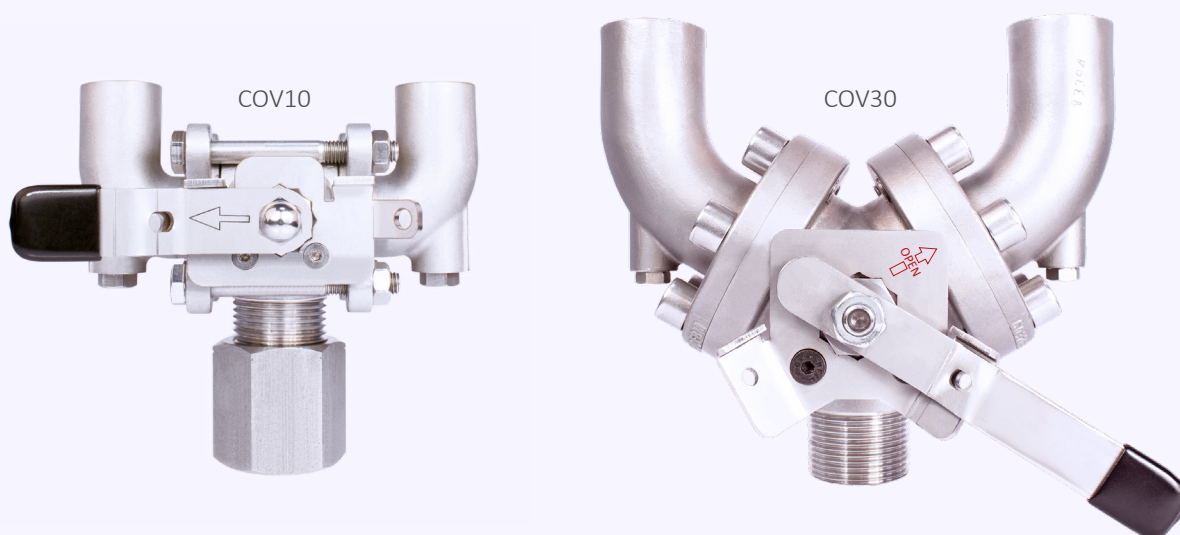
## Specifications: COV30

System Connections	1" to 1-1/2" BSP, BSPT, NPT, CL150 to CL600 & PN16 to PN100
Valve Connections	¾" to 1" BSP, BSPT, NPT (with or without orientators), CL150 to CL600 & PN16 to PN100
Change-Over Valve Kv	30
Materials of Construction	CF8M/316/1.4401
Seat Materials	25% Carbon filled P.T.F.E.
Temperature Range	-196°C to +200°C
Max Design Pressure	CL600 or PN100
Material Certification	BS EN ISO10204 3.1 Pressure Retaining Parts (Optional Extra)
Safety Valve Orifice Size	Up to 18mm (Full Lift Type)
Maximum Safety Valve Set Pressure	100 bar

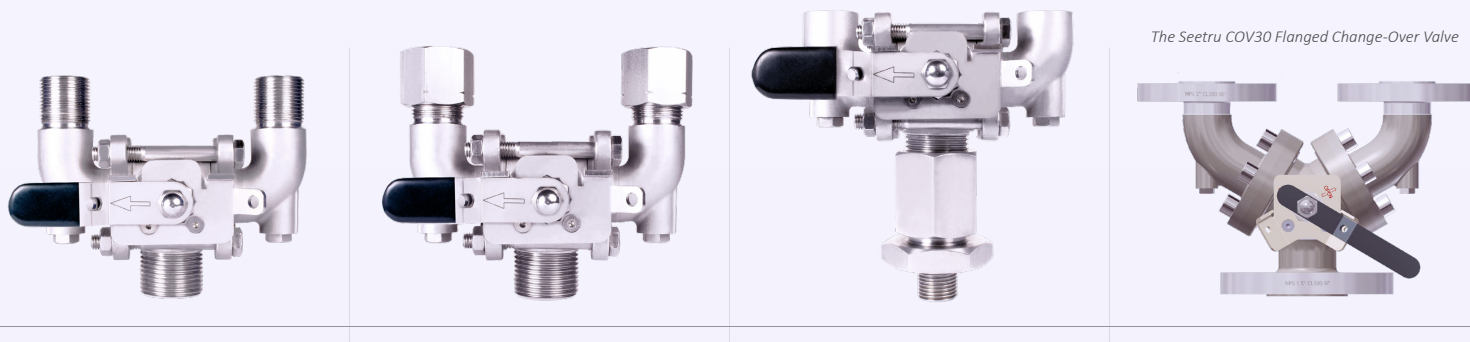


## Operation Instructions: COV10 / COV30

1	Unlock handle if locking device fitted (recommended).
2	Starting in a motion away from the duty SRV, rotate handle through 180° (COV10) or 120° (COV30), either clockwise or anticlockwise dependent upon start starting position.
3	Once fully rotated, lock in position if locking device fitted (recommended).
4	If the now standby SRV is to be remove: with caution, un-tighten vent nut of standby Change-over arm by 1 to 2 revolutions to exhaust trapped fluid from change-over arm.
5	Once trapped fluid has de-pressurised, re-tighten vent plug with a tightening torque of 3.0 Nm.
6	Remove the standby SRV.
7	The user may plug the vacant outlet if desired, however sufficient safety procedures (for example Lock out Tag out) must be in place to prevent inadvertent change over, thus rendering the system un-protected against excessive pressure. If the outlet is plugged, vent arm of pressure, as previously described, prior to removal.



## Fittings, Adaptors and Connections



The Seetru COV30 Flanged Change-Over Valve

- The Seetru COV10 and COV30 Change-Over Valves can be supplied with a range of fittings and adaptors to provide compatibility with a large variety of systems.
- The COV30 is also available with flanged connections (A or PN).

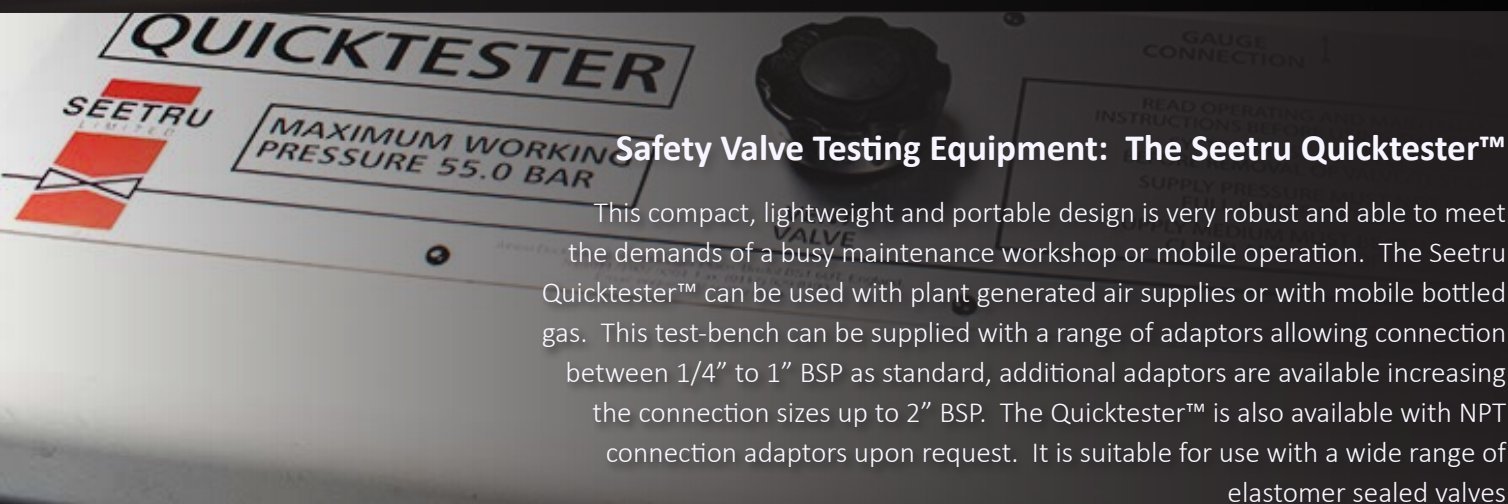


## Valves from Stock: Same-Day-Despatch

Our products are recognised globally for their exceptional quality and reliability, and in recent years Seetru have worked hard to maximise the efficiency of our manufacturing processes, to ensure that we are able to meet demands for supply and distribution. We now hold a large variety of safety valves in stock, allowing customers to purchase certain quantities from our website, and see them despatched on the same day.

Seetru offer atmospheric discharge safety valves and pipped discharge safety valves in brass / bronze or stainless steel. The Seetru LGS® range of pressure relief valves (for liquid, steam, and gasses) are available in bronze construction, with open-lever and sealed-cap options. These valves can be fitted with PTFE or EPDM seals, with both types having the WRAS approval- for installation on public water supply systems.

Seetru also operate a standardised three-day-despatch delivery service, which covers the entire range of valves we manufacture.

A close-up photograph of the Seetru Quicktester safety valve testing equipment. The device is white with a black control knob and a red valve symbol. Text on the device includes 'QUICKTESTER', 'SEETRU', 'MAXIMUM WORKING PRESSURE 55.0 BAR', 'GAUGE CONNECTION', 'READ OPERATING INSTRUCTIONS', and 'SUPPLY PIPING'.

### Safety Valve Testing Equipment: The Seetru Quicktester™

This compact, lightweight and portable design is very robust and able to meet the demands of a busy maintenance workshop or mobile operation. The Seetru Quicktester™ can be used with plant generated air supplies or with mobile bottled gas. This test-bench can be supplied with a range of adaptors allowing connection between 1/4" to 1" BSP as standard, additional adaptors are available increasing the connection sizes up to 2" BSP. The Quicktester™ is also available with NPT connection adaptors upon request. It is suitable for use with a wide range of elastomer sealed valves

## Liquid Level Gauges

There are many industrial applications that require the monitoring of the liquid level in tanks. While the function of a level gauge is relatively simple, there are a variety of options available. The suitability and robustness of construction materials play a role in determining which gauge is required, as do the operating temperature and pressure requirements. Seetru liquid level gauges are primarily of two types, sight gauges and magnetic float by-pass gauges. Many of the Seetru gauges are direct reading though most have optional electronic remote reading systems and computer interfaces. The range includes the Quickmount, Seemag and CPI gauges for industrial and chemical applications and the Seeflex and Seemag for marine applications.