



**BEI** Services  
[www.blupax.com](http://www.blupax.com)



*'Flexibility' and 'Reliability' ...a service you can trust*  
**Blupax Engineering and Industrial services**



**OPERATIONS MANAGER**  
Gary Holcombe  
gary.holcombe@blupax.com  
Tel: 01642 625 902

**SALES DEPARTMENT**  
Reception  
sales@blupax.com  
Tel: 01642 625 900

**SENIOR SALES ENGINEER**  
James Challes  
james.challes@blupax.com  
Tel: 01642 625 908

**TRAINING CO-ORDINATOR**  
Dawn Watson  
dawn.watson@seetru.com  
01642 625 906

**SES CO-ORDINATOR**  
Jill Peacock  
jill.peacock@seetru.com  
Tel: 01642 625 904

**REGIONAL SALES MANAGER  
(NORTH)**  
Ron Critchlow  
ron.critchlow@blupax.com  
Tel: 07583 973 994

**REGIONAL SALES MANAGER  
(SOUTH)**  
Andy Jones  
andy.jones@blupax.com  
Tel: 07949 862 596

# BEI Services

www.blupax.com

**Blupax Engineering & Industrial Services** is an online company which specialises in providing engineering products such as valves and actuators to a wide range of industries. We currently have over 7,000 products available on our website and aim to increase this with the addition of new parts on a monthly basis. Blupax are able to source from a large variety of manufacturers whose products carry many internationally recognised approvals and certifications. Our Offices are located in Stockton-On-Tees



## OVERVIEW

### Training Courses

All Blupax training courses are available through our UK training centre network, alternatively we can arrange for one of our representatives to visit your place of work. For a competitive quotation please complete our *Quotation Request Form*. If you have a particular training requirements which are not currently listed please contact us with details and we will customise a solution to fit your needs



### Procurement - Leading brands and suppliers

Blupax are able to source products from around the globe, our aim is to supply only the finest in quality and reliability from recognised industry professionals

Seetru | Gresswell | Nabic | Ari Armaturen | Broady | Lorch | Tosaca | Niezgodka | Wade Bailey Birkett | Ritag | Stafsjo | Leser | Valbia | Norbro | Spirax Sarco | Max Air | Actreg

### Blupax Service & Exchange - Valve Management

A complete problem solving service for pressure relief valve inventories and engineering maintenance services. Blupax can provide on-site and off-site calibration, test, over hall and maintenance services ...through our partner **Seetru Engineering Services**





# BEI Services

www.blupax.com

**Blupax Training** in association with our business partners are able to offer a wide range of training courses. Together we provide personal development training at locations throughout the UK.

**Course topics include:** Safety Relief Valves | Safety Pressure Devices | Practical Workshop Instruction | Sales Development Workshops | Leadership / Management courses



## TRAINING



### NTP (National Training Programme) SRV Training

Attend one of our safety pressure device training courses, held in one of our training centres located at BRISTOL (SW) and STOCKTON-ON-TEES (NE). We offer standard courses at beginner, intermediate and advanced level, most courses have a practical element, examine the course contents to ensure you are attending the correct course for your needs

### Blupax Training Courses (Training in the Workplace)

Blupax training courses are modular and adaptable. The module elements can be picked from the various typical course contents list to form new courses or to amend and adapt existing courses to suit your needs.

These courses are designed to be held at your workplace using your equipment, all Courses can be developed to incorporate customer specific requirements, for example, to cover company specific procedures and documentation or to cover additional technical areas.



**BLUPAX  
TRAINING**



### Blupax Bespoke Training Courses - Comprehensive Package

We are able to provide bespoke training courses tailored to the client's individual needs including induction training incorporating specific client procedural additions in addition and incorporated into our training courses. Please contact us for additional information

# BEI Services

www.blupax.com

Blupax Training in association with our business partners are able to offer a wide range of training courses. Together we provide personal development training at locations throughout the UK.

**Course topics include:** Safety Relief Valves | Safety Pressure Devices | Practical Workshop Instruction | Sales Development Workshops | Leadership / Management courses



## NTP

### Best Engineering Practice (Awareness and Appreciation)

Safety Valve Training Courses with stages of development from the beginner to the advanced engineer

**Details:** We offer standard courses at beginner, intermediate and advanced level, most courses have a practical element, check the course contents to ensure you are attending the correct course for your needs

**Duration: 1 DAY COURSE**  
**Location(s):**  
**Bristol & Stockton-On-Tees**

### Maintenance & Repair of Safety Valves

Safety Valve Training Courses with stages of development from the beginner to the advanced engineer

**Details:** We offer standard courses at beginner, intermediate and advanced level, most courses have a practical element, check the course contents to ensure you are attending the correct course for your needs

**Duration: 2 DAY COURSE**  
**Location(s):**  
**Bristol & Stockton-On-Tees**



### Full Training Package (Advanced)

Safety Valve Training Courses with stages of development from the beginner to the advanced engineer

**Details:** We offer standard courses at beginner, intermediate and advanced level, most courses have a practical element, check the course contents to ensure you are attending the correct course for your needs

**Duration: 3 DAY COURSE**  
**Location(s):**  
**Bristol & Stockton-On-Tees**

### Apprentice Valve Training

Apprentice Valve Training Courses offering a mix of Practical and theory training

**Details:** This 5 Day Package offers practical experience in a live workshop providing a useful mix of practical and theory based training, resulting in an examination and individual assessment of competency . (10 Day course also available)

**Duration: 5 DAY COURSE**  
**Location: Stockton-On-Tees ONLY**

### Apprentice Valve Training

Apprentice Valve Training Courses offering a mix of Practical and theory training

**Details:** This 10 Day Package offers practical experience in a live workshop providing a useful mix of practical and theory based training, resulting in an examination and individual assessment of competency. (5 Day course also available)

**Duration: 10 DAY COURSE**  
**Location: Stockton-On-Tees ONLY**



**Blupax Training** in association with our business partners are able to offer a wide range of training courses. Together we provide personal development training at locations throughout the UK

**Course topics include:** Safety Relief Valves | Safety Pressure Devices | Practical Workshop Instruction | Sales Development Workshops | Leadership | Management courses



## Blupax Training Courses

### Option 1 - Course Code: STS010708

**Title: Best Engineering Practice**  
(Awareness and Appreciation)

**Course Content:**

- Safety Valve types
- Safety Valve selection
- Installation and design
- Safety Valve Storage
- Installation onto systems
- Safety Valve Management regimes
- Testing, maintenance and re-setting
- Safety Valve disposal
- Assembly and testing demonstration

### Option 2 - Course Code STS030708

**Title: Maintenance and Repair of Pressure Relief Devices** with additional Practical procedures (Theory and Practical Intermediate)

**Course Content:**

- Construction / Design of a Safety Valve
- Selection Criteria of the Safety Valve
- Installation
- Definitions
- Any applicable internal standards and procedures (customer related)
- Controlling the isolation of pressure relief streams
- Periodic Testing, examination and Reconditioning of Safety Valves
- Authorised Technicians (Relief streams) Training and Working Instructions
- Dismantling of Safety Valves
- Checking and recording of each component
- Finishing and Lapping
- Re-assembly of Safety Valves
- Setting and Testing
- Sealing, type approval nameplates / Markings

### Option 3 - Course Code STS020708

**Title: Maintenance and Repair of Pressure Relief Devices**  
(Theory and Practical Advanced Course)

**Course Content:**

- The function of a safety relief valve
- Construction and design of safety and relief valves
- Sizing and selection of the safety valve
- Flowing Characteristics of safety and relief valves
- Overpressure and Blow-down
- Blow-down and Accumulation Rings
- UV and V destinations
- Bore size designations
- Controlling the isolation of pressure relief streams
- Safety and Relief valve overhaul and maintenance
- Installation and Storage
- Pre-strip down activities
- Checking components and recording
- Re-assembly
- Setting and testing
- Sealing and type approval nameplates

### Option 4 - Course Code STS040708

**Title: In-situ Safety Valve Testing using the Tru-test System** (Specialist Training Course)

**Course Content:** (Theory and Practical Course)

- What is in-situ testing to include Hot Testing and cold Testing
- In-situ testing versus bench testing and overhaul
- What does the Tru-test measure?
- Tru-test principal of operation
- What is an effective seal area
- Scope of Tru-testing
- Test Procedure
- Analysis of test results
- Practical demonstration of the Tru-test System

### Option 5 - Course Code STS0507085

**Title: Design, Selection, Installation & Maintenance/Repair of pressure Devices**  
(The Full Introductory Package)

**Course Content:** (Theory and Practical Course)

- Why Safety Valves are needed, legal and safety requirements
- Safety Valve types and terminology
- Safety Valve Standards
- Safety valves selection -including the requirements of the PED (European Pressure Equipment Directive) 97/23/EC
- Safety Valve Storage
- Installation design
- Installation onto systems
- Safety Valve disposal
- Blow-down and Accumulation Rings

- UV and V designations
- Accumulation (overpressure) and Blow-down
- Changeover valves and isolation systems
- Safety Valve Management legal requirements and regimes
- Factors affecting the management of safety valves
- Failure modes and troubleshooting
- Safety valve maintenance and overhaul
- Safety Inspection and testing
- In-situ safety valve testing
- PPE and why it's required
- Safety valve standards (e.g API rules and standards TUV AD Merlat-A2, BS759)
- Flange designations
- Setting and testing procedure
- Changing Components
- Bellows fitting and testing
- Procedures for the re-use of gaskets in valves for repair or overhaul

### Management Skills

#### Trainer Skills & Techniques Workshop

This three-day course will investigate trainer training skills and techniques, based upon group centre learning style, our courses are designed to encourage trainers to directly involve students and monitor their progress.

All courses held at our Bristol site start at 9.00am, a buffet lunch is inclusive in the cost of the training. We have limited parking on site. For candidates that need to stay in Bristol overnight we can arrange a room in our local Premier Inn, situated in Welsh Back near the City Centre approx. 5-minute drive from our training centre.

### ISO 9001 Awareness Training

Courses which include: Management skills & Leadership | Senior Managers Programme | Supervisors Programme | Trainer-Training and Equal Opportunities...

Training Course's can be arranged to suit your needs, contact our training team for more information:

Email: [training@blupax.com](mailto:training@blupax.com)

T: +44 (0)1642 625 900

F: +44 (0)1642 612 100

# BEI Services

www.blupax.com

Blupax are able to source from large variety of manufacturers who's products carry many internationally recognised approvals and certifications: Seetru | Gresswell | Nabic | Ari Armaturen | Broady | Lorch | Tosaca | Niezgodka | Bailey Birkett | Ritag | Stafsjo | Leser | Valbia | Norbro | Spirax Sarco | Max Air | Actreg | Wade. Featured here is a selection of control valves available through Blupax. Also available are a wide selection of Safety Relief Valves, Auxilliary Valves, Liquid Level Gauges and large array of parts and spares



## PRODUCTS

### BEI Control Valves

#### Globe Double Seated Valve Series 2000

##### Features:

- 1) Trim is inherently pressure balanced
- 2) Excellent in handling unclean fluids ...Gases and Steam
- 3) Low noise trims are also available
- 4) Preferred in refineries and industries
- 5) Wherever the fluid contains sediments, solid particles and also where precision is important



#### Single Seated Globe Control Valve Series 1100

##### Features:

- 1) Precision Control
- 2) Excellent in handling clean fluids ...Gases and Steam.
- 3) Noise abating trim designs available
- 4) Anti Cavitation & flashing trim designs available
- 5) Multi Spring diaphragm & Compact design positioners



#### Globe Three Way Valve Series 3000

##### Features:

- 1) When one wants to split the fluid in TWO DIFFERENT directions or mix TWO DIFFERENT streams of fluids to achieve the desired control. This valve can satisfy the application

- 2) Both the characteristics i.e: linear I ON OFF are available



#### Angle Control Global Valve Series 5000

##### Features:

- 1) Suitable for Severe, Abrasive, Erosive applications



#### Metal Housed Globe Teflon Valve Series 1500

##### Features:

- 1) Globe Metal Housed Teflon Valves are cost effective and excellent in handling highly corrosive Fluids, Acids
- 2) The valve design has an increased PTFE Valve thickness (6mm minimum)
- 3) Maximum pressure 10 Bar
- 4) Maximum temperature: 1800 C



#### Flush Bottom Valve Series 9000

##### Features:

- 1) Flush Bottom Valves can be emptied from the underside
- 2) Effective in handling Highly Density/ Viscous Fluids ...also effective with Slurry
- 3) Jacketed bodies are also available to help maintain the liquid in flowing state





# BEI Services

www.blupax.com

Blupax are able to source from large variety of manufacturers who's products carry many internationally recognised approvals and certifications: Seetru | Gresswell | Nabic | Ari Armaturen | Broady | Lorch | Tosaca | Niezgodka | Bailey Birkett | Ritag | Stafsjo | Leser | Valbia | Norbro | Spirax Sarco | Max Air | Actreg | Wade  
Featured here is a selection of control valves available through Blupax. Also available are a wide selection of Safety Relief Valves, Auxilliary Valves, Liquid Level Gauges and large array of parts and spares



## TEST EQUIPMENT

Blupax have a range of safety valve testing & health monitoring equipment

These are portable test benches designed for the maintenance of safety valves.

This range of bench testers are capable of screwed or flanged connection from 1/4" BSP up to 10" Flanges in both DIN and ANSI.



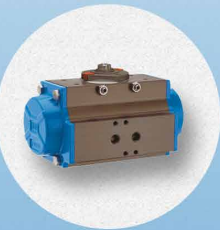
## FLANGES, SPARES & OTHER ASSESSORIES

Flanges, Fixing Items, Connectors, Seal Kits, Fusible Plugs and general engineering and industrial accessories



## ACTUATORS AND SPARES NORBOR | VALBIA | AIR MAX

Quarter turn actuators to drive Ball and Butterfly Valves. The torque given by the single acting actuator is defined by four fundamental valves



## WINDOW SIGHT GLASSES

Blupax has a selection of Sight Glasses which are available with a range of different material and design options



## VALVES

### GATE, GLOBE, BALL, KNIFE EDGE & AIR START VALVES

Screwed and Flanged Valves manufactured in Brass, Bronze, Cast Iron, Cast Steel and stainless Steel.



## SAFETY RELIEF VALVES & LIQUID LEVEL GAUGES

Valves currently available in this section include the following brands: SEETRU, NIEZGODKA, LORCH, NABIC, LESER, TOSICA, BROADY



## CHECK, PRESSURE REDUCING & FLOAT VALVES

Our valves are technically optimised to satisfy your high demands on pressure loss, flow speed and functionality. Careful assembly and testing of the completed valve, as well as quality-assuring measures, such as PMI (Positive Material Identification), ensure quality which has been proven and on which you can rely.



## Y & INLINE STRAINERS

Strainers and Filters, available in many designs including Pot Strainers and the Standard Y Type Strainers -DN 15-DN400 up to PN160 and maximum temperatures of 400C.





# BEI Services

www.blupax.com

Here at **Blupax Engineering & Industrial Services** we aim to provide the most efficient and effective valve services possible for our customers. Having the ability to maintain customers valves in one of our specialized workshops or to send technicians to a customers site equipped with testing and refurbishment equipment provides a range of options for the customer to suit their needs and requirements



## SERVICES

In conjunction with our partners  
Seetru Engineering Services



## SURFACE PREPARATION AND RE-FINISHING

*Providing high quality Surface Preparation and Re-finishing. These services will ensure your valves are suitably protected against rust and wear as well as being easily identifiable and well presented*

### Surface Cleaning

For small to medium amounts of rust

### Lapping

For valves with metal to metal sealing faces we offer our Lapping services

### Shot Blasting

For large amounts of rust, substance build up and dirt

### Chemical Bath

For components that have large amounts of rust, substance build up and dirt but are not robust enough to be shot blasted

### De-greasing

For valves that are to be used in a hygienic environment or on a medium such as pure oxygen we provide our de-greasing service

## SAFETY VALVE SERVICES

### Standard Refurbishment

For valves which require a complete overhaul including internal cleaning we offer our Standard Refurbishment service

### Test/Reset & Certify

For valves which require no cleaning or disassembling but need re-certifying or resetting we offer our Test/Reset & Certify service. Below is a breakdown of the steps involved

### Part-Fitting, Test & Certify

For valves which require re-certifying or resetting but also require a new part (For example a new spring, seal or inlet) to be fitted we offer our Part-Fitting, Test & Certify Service

## COMPU-TEST

*High accuracy valve testing using our Compu-Test system*

### Seetru Compu-test™

Seetru's Compu-Test™ system provides a highly accurate digital recording of a valves leak, set and re-seat points

### Benefits of Compu-test™

- Fully computerized
- Automated and objective
- Set pressure measurement
- Electronic bubble count leak rate test
- Condition Rating® measurement
- Detailed analysis of valve operation
- Computerized full test records for certificate
- Test results printout for certificate
- Patented worldwide

## OTHER VALVE SERVICES

In addition to Safety Relief Valves, our highly skilled technicians have the experience and knowledge to test and refurbish many types of valves and other plant equipment. Ranging from Isolation valves to Steam traps our technicians have the knowledge required to ensure they run as efficiently and effectively as they are intended

### Isolation & Control Valve Maintenance

### Pressure Reducing Valve Maintenance

### Pressure Gauge Calibration

## CONDITION RATING

*Determine a maintenance schedule using our Condition Rating system.*

Seetru Engineering Services have developed their own Condition Rating system that provides a measured and concise analysis of safety valves. Using our Compu-Test™ software we can measure and record all the important parameters and produce a simple to understand reading

**compu-test0 - 3 = An "as new" condition and within the manufacturers design and build tolerances, very little or no deterioration.**

**3 - 6 = A valve that will still protect the system but is starting to show signs of deterioration.**

**6 - 9 = Absolute limit of acceptability and requires remedial work at the very first opportunity.**

**>10 = Valve will not protect the system as the manufacture and de-**

SES Contact

Jill Peacock

T: +44 (0)1642 625 900

jill.peacock@seetru.com

# BEI Services

www.blupax.com

Blupax are able to source from large variety of manufacturers who's products carry many internationally recognised approvals and certifications: Seetru | Gresswell | Nabic | Ari Armaturen | Broady | Lorch | Tosaca | Niezgodka | Bailey Birkett | Ritag | Stafsjo | Leser | Valbia | Norbro | Spirax Sarco | Max Air | Actreg | Wade  
Featured here is a selection of control valves available through Blupax. Also available are a wide selection of Safety Relief Valves, Auxiliary Valves, Liquid Level Gauges and large array of parts and spares



# LESER UK



LESER safety valves are used by leading companies in industries such as chemical, petrochemical, industrial gases, oil and gas production, and machine building, as well as the food and pharmaceutical industry. With more than 800 employees, LESER is the largest manufacturer of safety valves in Europe and a leader in its market worldwide.

LESER offers spring-loaded and pilot-operated safety valves for all industrial applications according to PED and ASME VIII as well as application-based solutions for special requirements.

Leser UK is the UK arm of Leser GmbH in Hamburg Germany with a reputation of high quality, speedy delivery and technical excellence. The internal and external sales team at Leser UK are part of a continuous personal development programme involving UK in-house and outbound training as well as specialist training at Leser GmbH in Germany.

We aim for same day quotation for simple enquiries and strive towards great customer service ...whether it is technical support at the initial enquiry stage or after sales care.

LESER UK Limited  
Albion Dockside Works  
BS1 6UT Bristol  
United Kingdom  
Telephone: +44 117 9306113  
Facsimile: +44 117 9298193  
Email: [sales@leser.co.uk](mailto:sales@leser.co.uk)  
[www.leser.com](http://www.leser.com)

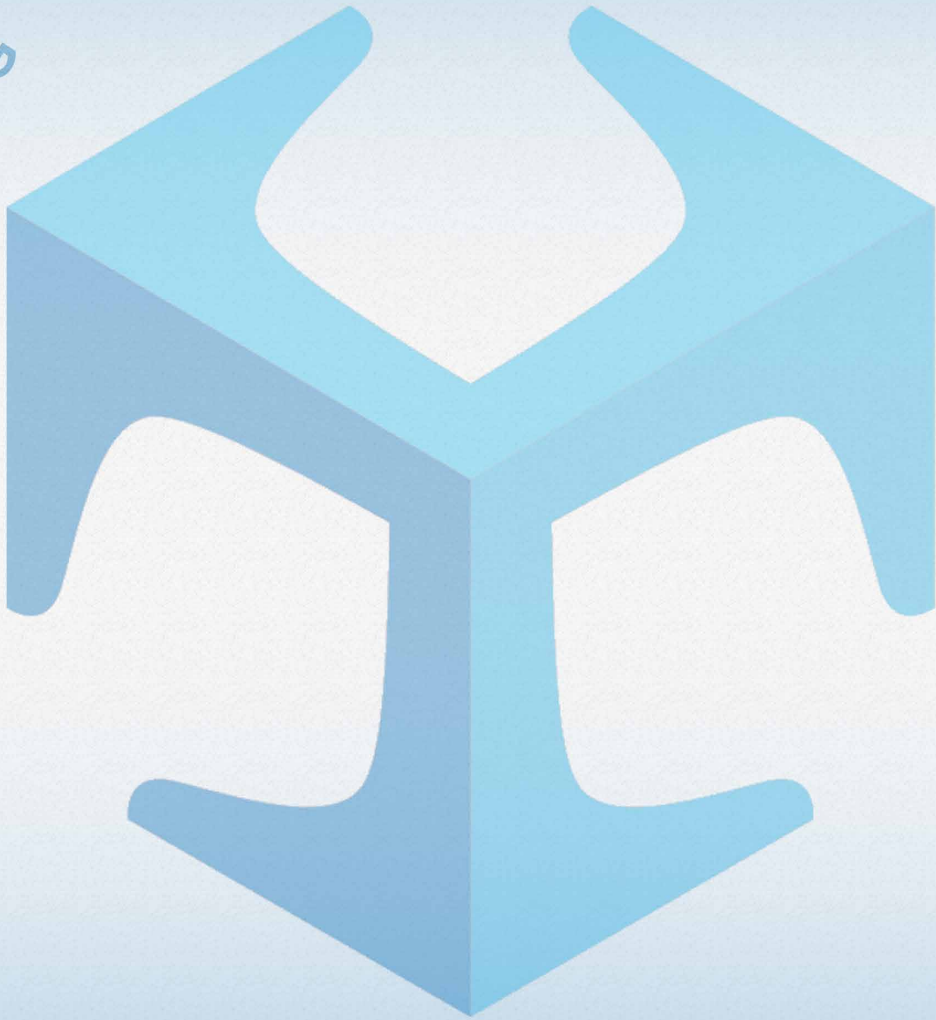
BEI Services (UK) (Blupax Engineering & Industrial Services UK) is a member of the Seetru organisation and intergrated group of subsidiary and associated companies

# BEI Services

[www.blupax.com](http://www.blupax.com)

TRAINING

SERVICES



PRODUCTS

T: +44 (0)1642 625 900

BEI Services (UK)  
Units 3, Navigator Court,  
Preston Farm Industrial  
Estate  
Stockton-On-Tees

Email: [sales@blupax.com](mailto:sales@blupax.com)





**BEI** Services  
[www.blupax.com](http://www.blupax.com)

